



**FOUNTAIN**  
R E S I D E N C Y

*A wonderful choice*

DEVELOPER

**AHALYNA**

أهالينا

AHALYNA COMPANY LIMITED



**FOUNTAIN**  
RESIDENCY

**Contact Us Today**

**For more information, booking, or inquiries, call us at:**

**0119 333 000**

**Website:**

**[www.ahalynagroup.com](http://www.ahalynagroup.com)**

**Pay us a visit at:**

**Wood Avenue Park Apartments  
Kilimani, Nairobi, Kenya**

DEVELOPER

**AHALYNA**

**أهالينا**

AHALYNA COMPANY LIMITED



## FOUNTAIN RESIDENCY

We are inviting you to envision the future together, let your heart beat the Fountain with everything you need in one setting.

Located at the junction of Muringa Road and Kirichwa Road, Fountain Residency offers a sophisticated living experience designed for modern urbanites.

This modern project blends convenience, style, and investment potential, making it the perfect place to live or invest in the city.

Enjoy luxurious living on 1 & 2 bed apartments with a 30 months payment plan at 0% interest.

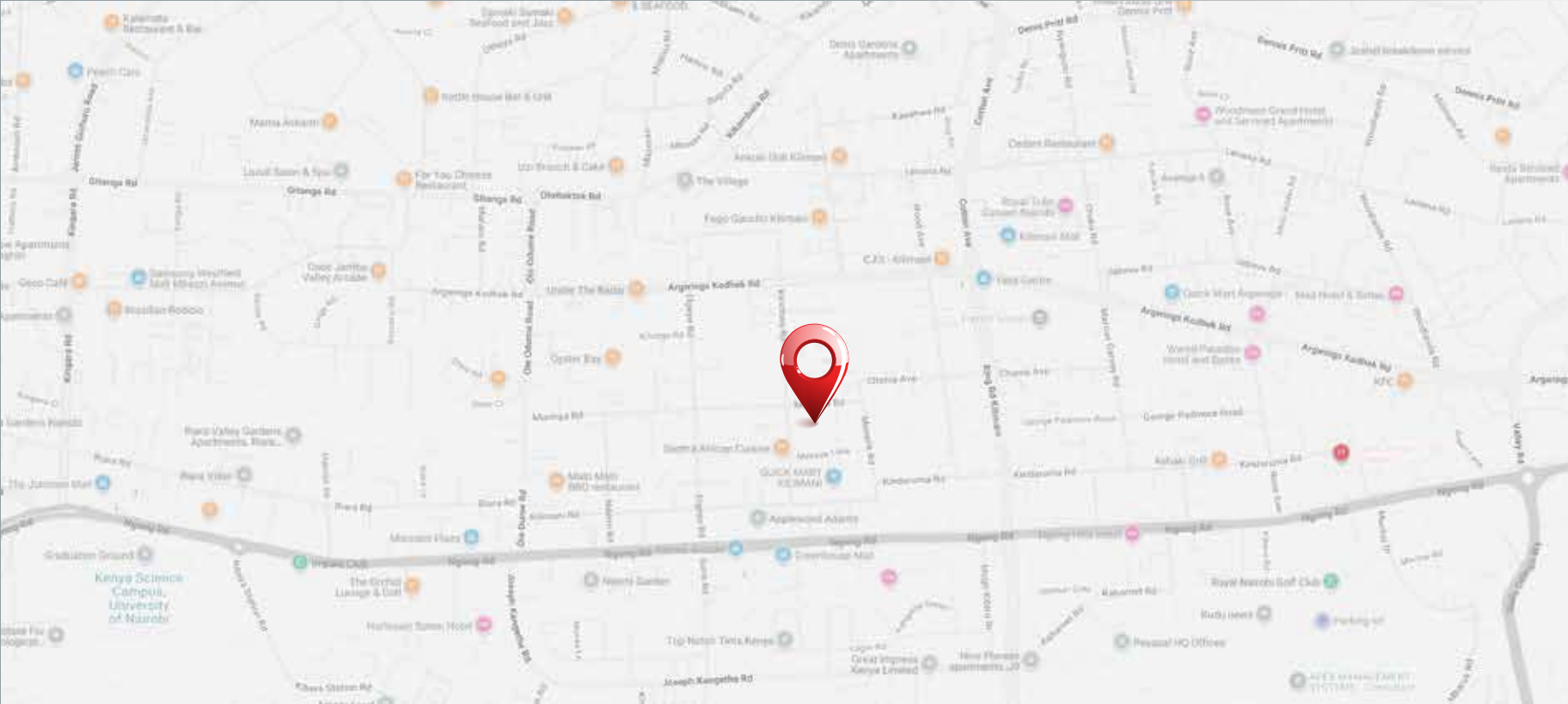
*A wonderful choice*



FOUNTAIN

# LOCATION

Located at the junction of Muringa Road and Kirichwa Road.



## SCHOOLS

- Riara Schools - 7 min drive
- Braeside Lavington - 9 min drive
- Hekima University- 10 min drive

## MALLS

- Yaya Centre - 5 min drive
- Prestige Plaza Shopping Mall - 6 min drive
- Adlife Plaza - 4 min drive

## HOSPITALS

- Nairobi Hospital - 9 min drive
- The Nairobi Women's Hospital - 1 min drive
- Coptic Hospital- 7 min drive

## RECREATIONAL FACILITIES

- Nairobi Jaffery Sports Club - 11 min drive
- Impala Club - 6 min drive
- The Royal Nairobi Golf Club- 10 min drive

SCAN FOR LOCATION

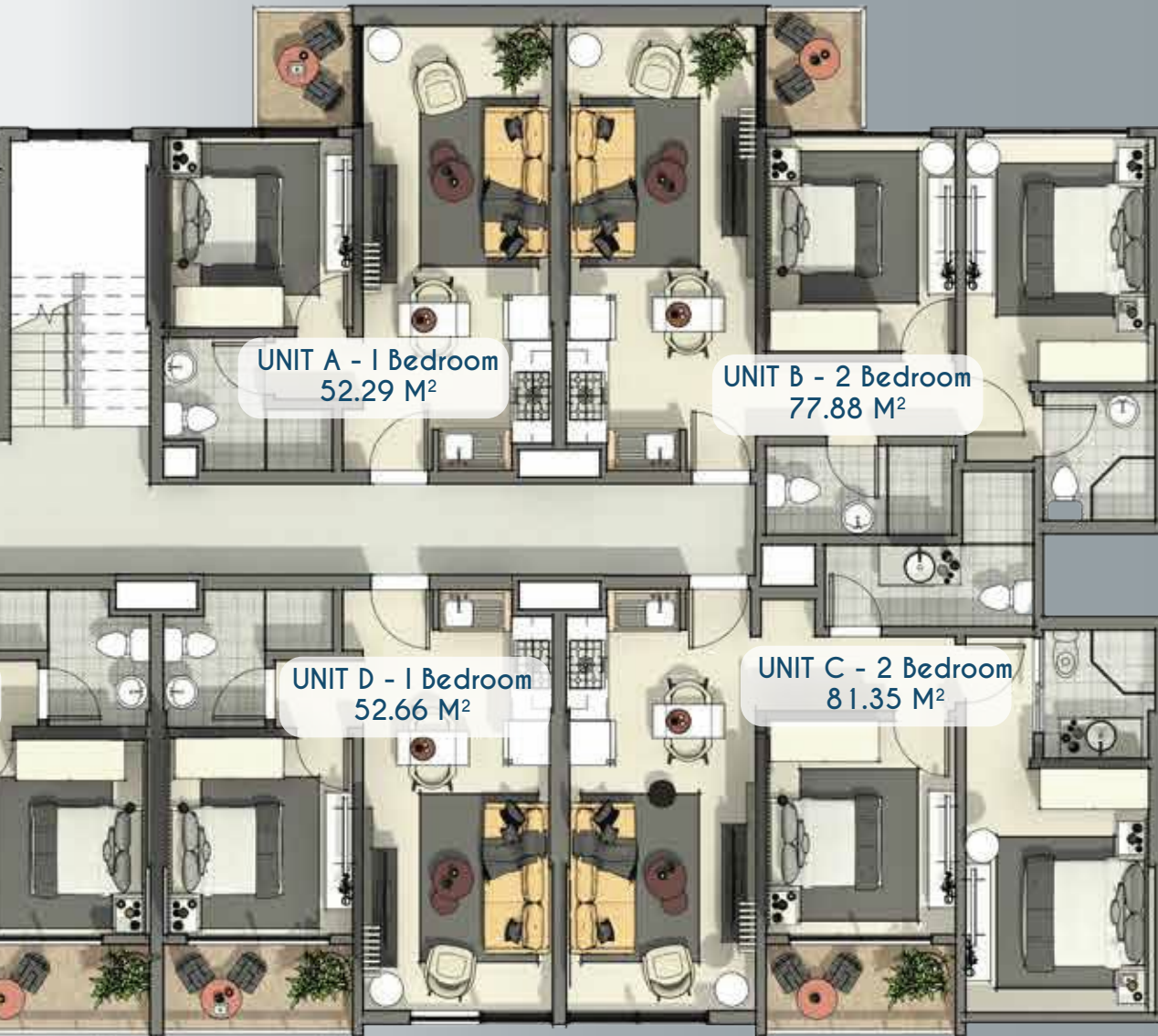


# TYPICAL FLOOR PLAN

MURINGA ROAD



KIRICHWA ROAD



UNIT A - 1 Bedroom  
52.29 M<sup>2</sup>

UNIT B - 2 Bedroom  
77.88 M<sup>2</sup>

UNIT D - 1 Bedroom  
52.66 M<sup>2</sup>

UNIT C - 2 Bedroom  
81.35 M<sup>2</sup>

*A wonderful choice*

# TYPICAL FLOOR PLAN



UNIT A - 1 Bedroom  
52.29 M<sup>2</sup>



UNIT B - 2 Bedroom  
77.88 M<sup>2</sup>





UNIT C - 2 Bedroom  
81.35 M<sup>2</sup>



UNIT D - 1 Bedroom  
52.66 M<sup>2</sup>



# TYPICAL FLOOR PLAN



UNIT E - 1 Bedroom  
55.71 M<sup>2</sup>



UNIT F - 1 Bedroom  
52.68 M<sup>2</sup>





UNIT G - 2 Bedroom  
115.93 M<sup>2</sup>



UNIT H - 1 Bedroom  
53.76 M<sup>2</sup>



# LIFESTYLE INSPIRATION

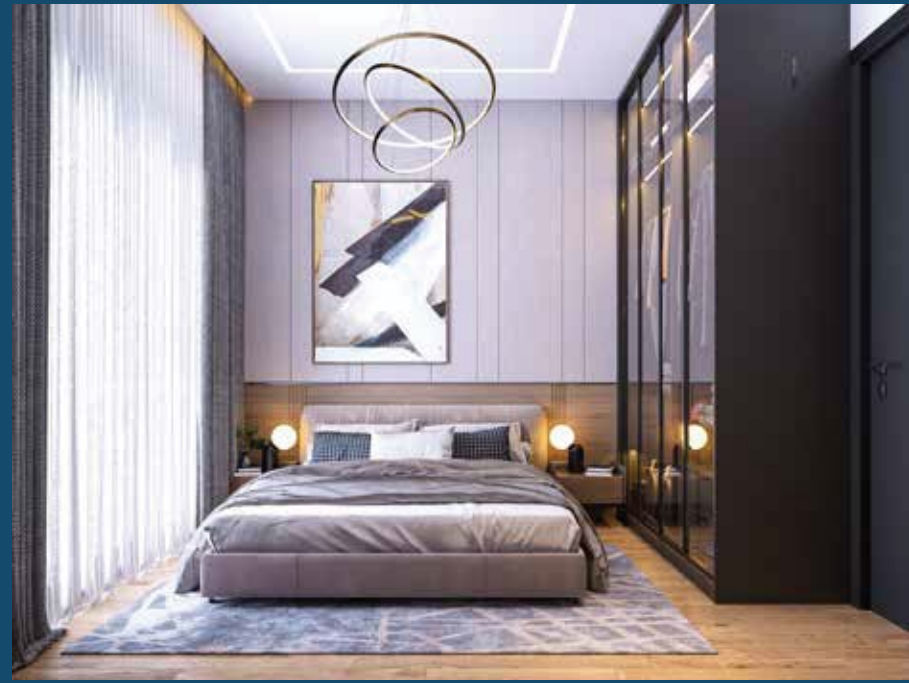


*A wonderful choice*





*A wonderful choice*



# AMENITIES:



Billiards Room



Indoor Swimming Pool



Steam & Sauna



Rooftop Café



Ample Parking



Rooftop Fully Equipped Gym



Yoga Garden





AHALYNA

أهالينا  
AHALYNA COMPANY LIMITED

Ahalyna limited company is dedicated in delivering high-quality and innovative projects that *exceed customer expectations*.

our primary focus in on customer satisfaction, and we achieve this by working closely with our clients throughout the *entire development, design, and implementation process*.

In line with the KSA's vision 2030, we are committed to adopting global sustainability measures and creating a positive impact on the urban environment.

*A wonderful choice*



FOUNTAIN